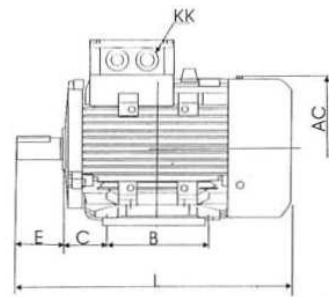
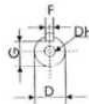
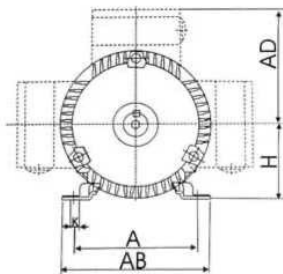
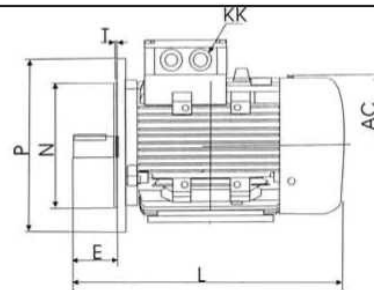
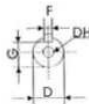
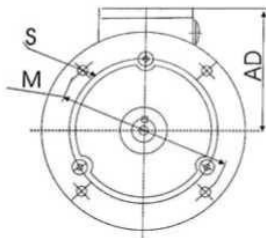


**IM B3 IM 1001**  
**6SM 56...132**



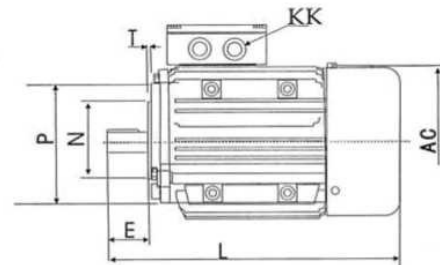
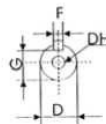
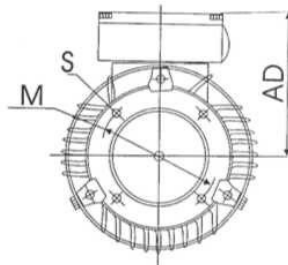
**IM B5 IM 3001**  
**6SM 56...132**

**IM B35 IM 2001**  
**6SM 56...132**



Tipas	A	AB	AC	AD	B	C	D	DH	E	F	G	H	K	KK	L	M	N	P	S	T
56	90	115	110	100	71	36	9	M4X12	20	3	7,2	56	5,8	M16X1,5	195	100	80	120	7	3
63	100	135	130	115	80	40	11	M4X12	23	4	8,5	63	7	M16X1,5	215	115	95	140	10	3
71	112	150	145	120	90	45	14	M5X12	30	5	11	71	7	M20X1,5	240	130	110	160	10	3,5
80	125	165	175	145	100	50	19	M6X16	40	6	15,5	80	10	M20X1,5	290	165	130	200	12	3,5
90S	140	180	195	155	100	56	24	M8X19	50	8	20	90	10	M20X1,5	310	165	130	200	12	3,5
90L	140	180	195	155	125	56	24	M8X19	50	8	20	90	10	M20X1,5	335	165	130	200	12	3,5
100L	160	205	215	180	140	63	28	M10X22	60	8	24	100	12	M20X1,5	368	215	180	250	15	4
112M	190	230	240	190	140	70	28	M10X22	60	8	24	112	12	M25X1,5	395	215	180	250	15	4
132S	216	270	275	210	140	89	38	M12X28	80	10	33	132	12	M25X1,5	435	265	230	300	15	4
132M	216	270	275	210	178	89	38	M12X28	80	10	33	132	12	M25X1,5	475	265	230	300	15	4
132MA	216	270	275	210	178	89	38	M12X28	80	10	33	132	12	M25X1,5	500	265	230	300	15	4

**IM B14 IM 3601**  
**6SM 56...132**



Tipas	AC	AD	D	DH	E	F	G	KK	L	B14				
										M	N	P	S	
56	110	100	9	M4X12	20	3	7,2	M16X1,5	195	65	50	80	M5	2,5
63	130	115	11	M4X12	23	4	8,5	M16X1,5	215	75	60	90	M5	2,5
71	145	120	14	M5X12	30	5	11	M20X1,5	240	85	70	105	M6	2,5
80	175	145	19	M6X16	40	6	15,5	M20X1,5	290	100	80	120	M6	3
90S	195	155	24	M8X19	50	8	20	M20X1,5	310	115	95	140	M8	3
90L	195	155	24	M8X19	50	8	20	M20X1,5	335	115	95	140	M8	3
100L	215	180	28	M10X22	60	8	24	M20X1,5	368	130	110	160	M8	3,5
112M	240	190	28	M10X22	60	8	24	M25X1,5	395	130	110	160	M8	3,5
132S	272	210	38	M12X28	80	10	33	M25X1,5	435	165	130	200	M10	3,5
132M	272	210	38	M12X28	80	10	33	M25X1,5	475	165	130	200	M10	3,5
132MA	272	210	38	M12X28	80	10	33	M25X1,5	500	165	130	200	M10	3,5

